

4XPH

PINTLE HEAVY EQUIPMENT TRANSPORT TRAILER

BigTex TRAILERS®



GVWR: 48,000#



EMPTY WEIGHT: 10,150# (24'+5' Model)



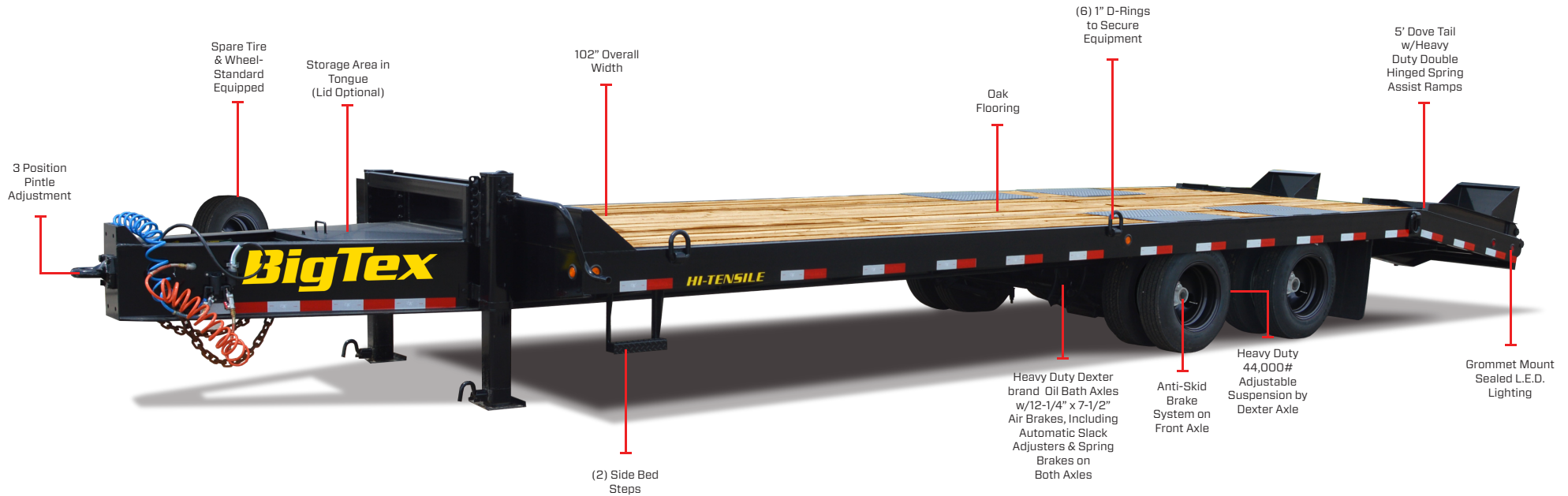
AVAILABLE LENGTHS: 20'+5' - 24'+5'



BED WIDTH: 102" WIDE



COUPLER: 60,000# 3" ID Pintle Eye



*Dual jacks and locking lid on tongue are not standard features.



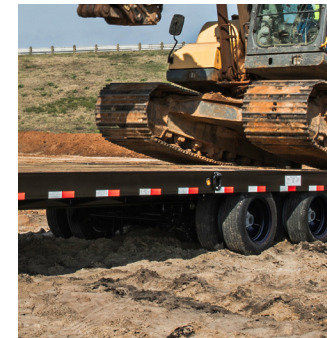
ADJUSTABLE PINTLE RING

The 4XPH has a 3 position 3" ID Pintle Ring coupler specifically built for tow vehicles equipped with pintle hitches.



FRONT STOP RAIL

This trailer is equipped with a solid one piece stop rail to ensure safety when loading and towing cargo.



HEAVY DUTY AXLES

The 4XPH comes equipped with two Heavy Duty Oil Bath Axles w/12-1/4" x 7-1/2" Air Brakes, Including Automatic Slack Adjusters & Spring Brakes on Both Axles.